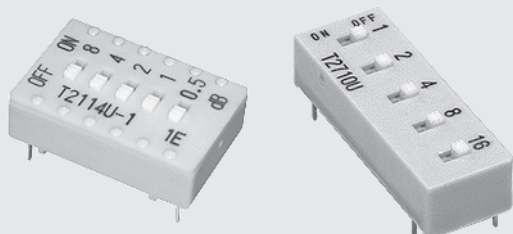


## RoHS compliant



## FEATURES

- New lineup T2710 series
- Gold-plated contact provides excellent reliability
- Covering the DC to 150kHz frequency range
- Corresponds to the unbalanced circuit or balanced circuit (Balanced circuit type: T2114 series lineup only)

## APPLICATIONS

It is used for the speech equipment of 600Ω system.  
The high frequency attenuator can be used to adjust the voice level .

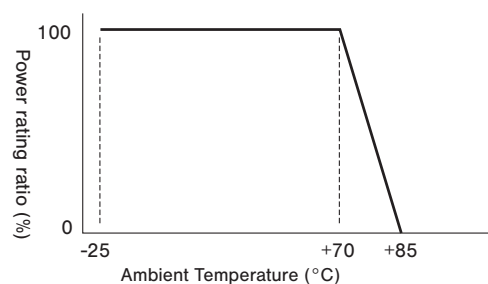
## LIST OF PART NUMBERS / SPECIFICATIONS

		T2114 series		T2710 series
Attenuation	0.5,1,2,4,8 dB; 15.5 dB total	T2114UW 600 Ω 0.5dB	T2114BW 600 Ω 0.5dB	T2710UW 600 Ω 0.5dB
	1,2,4,8,16 dB; 31 dB total	T2114UW 600 Ω 1dB	T2114BW 600 Ω 1dB	T2710UW 600 Ω 1dB
Circuit		Unbalanced	Balanced	Unbalanced
Impedance		600 Ω		600 Ω
Frequency		DC ~150 kHz		DC ~150 kHz
Rated Power		50 mW (The derating curve of rated power is a figure right below.)		50 mW (The derating curve of rated power is a figure right below.)
Operating Temperature Range		- 25 ~ 85 °C		- 25 ~ 85 °C
Packaging Specifications		Tray packaging	Tray packaging	Tray packaging

## PART NUMBER DESIGNATION

T2710	U	W	600Ω	0.5dB
Series name T2114, T2710	Minimum Step of Attenuation 0.5dB or 1dB			
Circuit Configuration U : Unbalanced B : Balanced	Nominal Impedance 600 Ω			
	Form of Packaging W : Tray packaging			

## DERATING CURVE OF RATED POWER



# T2114 / T2710

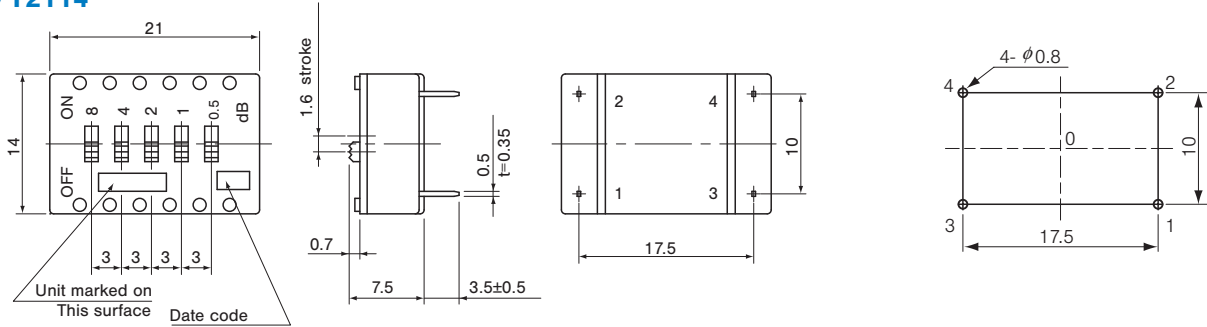
## STEP TYPE VARIABLE ATTENUATORS

### OUTLINE DIMENSIONS

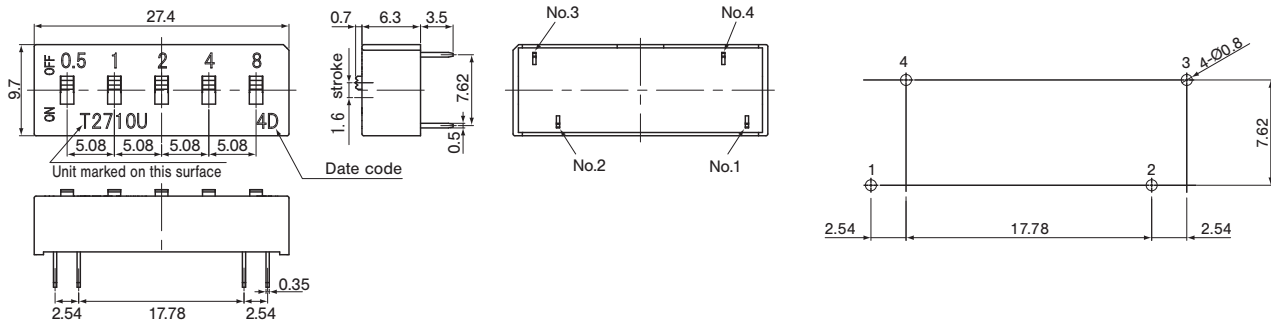
Unless otherwise specified, tolerance :  $\pm 0.3$  (Unit : mm)

### Mounting hole dimension on P.C.B.

#### T2114



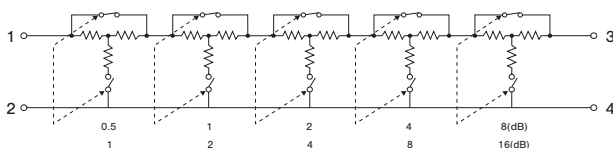
#### T2710



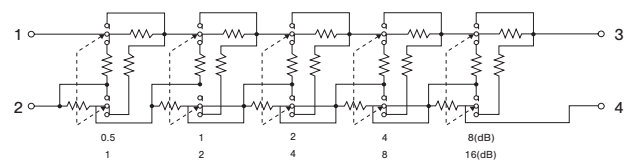
### EQUIVALENT CIRCUIT

#### T2114

U type (Unbalance)

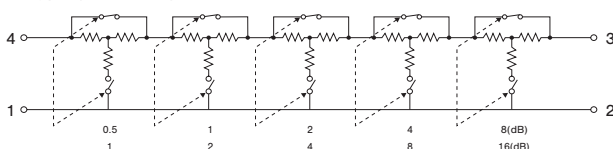


B type (Balance) \* T2114 only



#### T2710

U type (Unbalance)



### PACKAGING SPECIFICATIONS

#### Tray packaging specifications (T2114)

- Tray version is packaged in 50 pcs. per tray. Orders will be accepted for units of 50 pcs., i.e., 50,100,150 pcs. etc.
- Tray version is boxed with 10 trays (standard).

#### Tray packaging specifications (T2710)

- Tray version is packaged in 50 pcs. per tray.
- Tray version is boxed with 2 trays. Orders will be accepted for units of 100 pcs.