

STEPPING MOTORS

SPG27-2000

FEATURES

- Compact stepping motor with gear head
- Provided with connector terminals for easy connection
- RoHS compliant

APPLICATIONS

- Game machines
- Printers
- Valve actuations



PART NUMBER DESIGNATION

SPG27 - 2601

Series name

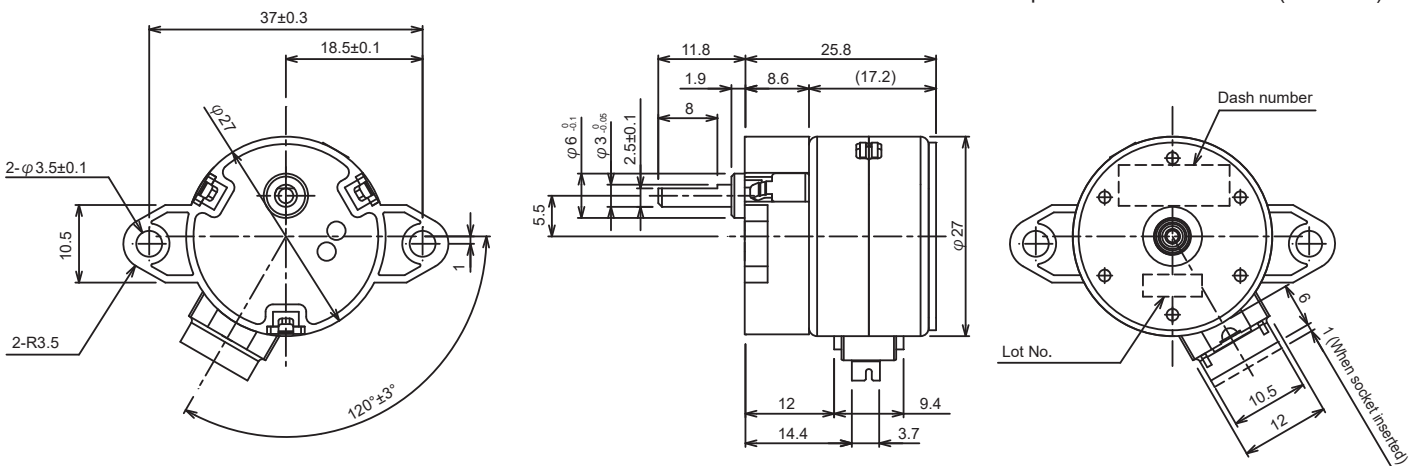
Dash number

LIST OF PART NUMBERS

Gear ratio	Winding resistance	30 Ω	60 Ω
		1/2.5	2203
1/5	Unipolar	2101	2601
1/12		2702	2701

OUTLINE DIMENSIONS (Reference)

Unless otherwise specified tolerance: ± 0.5 (Unit: mm)



Lot production is required. Please consult us for ordering.

SPG27-2000

STEPPING MOTORS

STANDARD SPECIFICATIONS

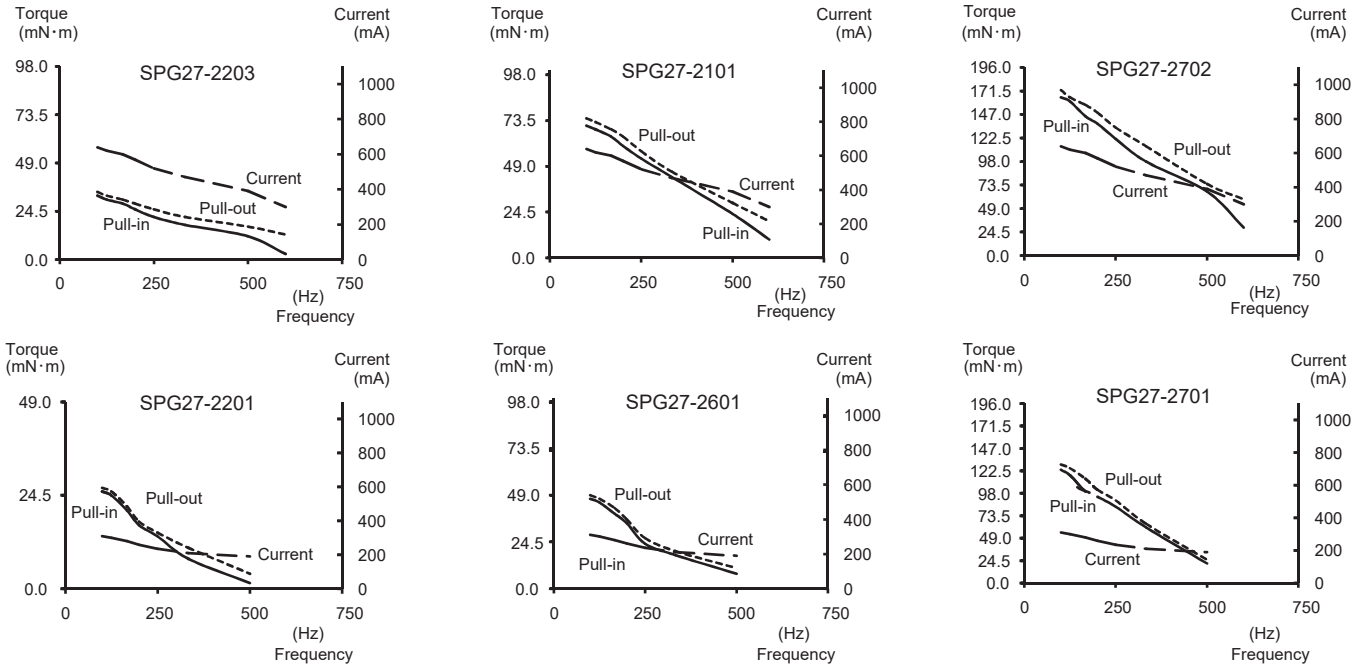
Item	SPG27-2000					
	2203	2101	2702	2201	2601	2701
Number of phases	4 phases unipolar(Substitutable as two bipolars due to open common terminal pins.)					
Gear ratio	1/2.5	1/5	1/12	1/2.5	1/5	1/12
Basic step angle 2 phases exciting Basic step angle	6°	3°	1.25°	6°	3°	1.25°
Steps 2 phases exciting	60	120	288	60	120	288
Winding resistance	30 Ω			60 Ω		
Power	Average power consumption 5W Max.					
Current	Refer to PERFORMANCE CURVES					
Pull-in torque						
Pull-out torque						
Pull-in pulse rate						
Temperature rise						
CURVES Insulation resistance	30MΩ Min.(DC500V)					
Dielectric strength	500Vrms(AC50Hz,1 minute)					
Operating temperature range	0 ~ 50 °C					
Net weight	Approx. 60 g					
Axial maximum load	Continuous	19.6 mN-m				
	Momentary	98 mN-m (Reference value)				
Standard connector terminal	<p>Male connector 06ZR-8M or ZHR-6 Made by J.S.T. Mfg. Co., Ltd</p> <p>The diagram shows a top view of the connector with six pins labeled 1 through 6. Above the pins are labels for phases: φ1, φ2, φ1C, φ2C, φ1, φ2. To the right, there are two coil diagrams. The first coil is connected to φ1 and φ1C. The second coil is connected to φ2 and φ2C. A central square symbol is also shown.</p>					

Lot production is required. Please consult us for ordering.

SPG27-2000 STEPPING MOTORS

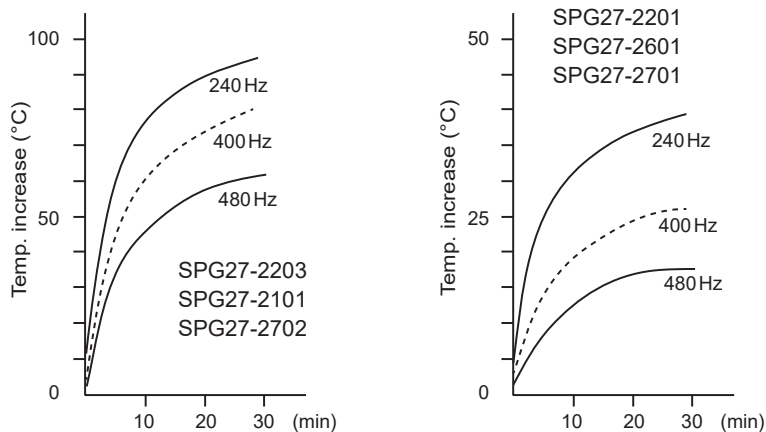
PERFORMANCE CURVES

12V-2phases-EX. (unipolar)



TEMPERATURE CHARACTERISTICS (REFERENCE VALUE)

12V-2phases-EX. (unipolar)



※ These performance curves show actual value, not guaranteed value.