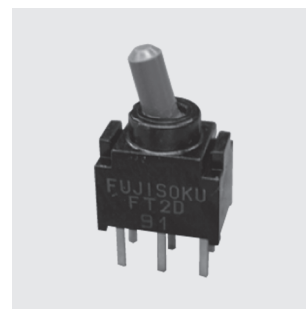


CFT2

Terminal Pins : Straight
Actuator Color : Gray

Washable

RoHS Compliant



Ultra-Miniature Toggle Switches

Features

1. Ultra-miniature toggle switch for high density mounting.
2. Washable.
3. Terminal pin pitch: 2.54 mm.
4. Independent detent mechanism ensures light operational feel.
5. Clip contact mechanism for long-term contact reliability.
6. Gold-plated contacts.

Specifications

Rating	Max.	28 VDC 0.4 VA max.
	Min.	1 μ A 20 mVDC
Initial contact resistance	100 m Ω max.	(1.5 mA 200 μ VAC)
Dielectric strength	250 VAC 1 minute	
Insulation resistance	500 M Ω min.	(250 VDC)
Electrical life	10,000 cycles at max. rating. 50,000 cycles at min. rating. (D.E type) 30,000 cycles at min. rating. (G.H type)	
Mechanical life	D.E type 50,000 cycles G.H type 30,000 cycles	
Operating temperature range	-40°C~+85°C	
Storage temperature range	-40°C~+85°C	

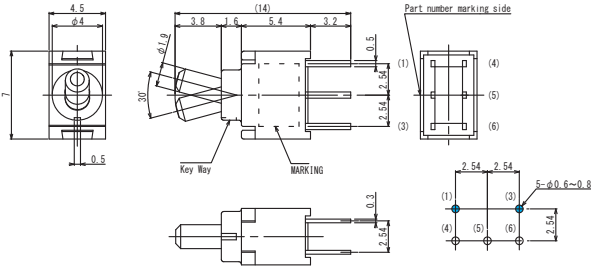
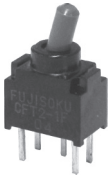
Part Numbering

CFT2		1	D	C4	A	W			
Series Actuator		Number of poles	Switching function	Terminal style	Actuator shape	Packaging spec			
Code	Type	Fig.	Number of poles	Fig.	Terminal style	Code	Actuator shape	Code	Packaging spec
T	Toggle	1	1 pole	D	ON - ON	A	Standard	W	Tray
				E	ON - OFF - ON				
				G	(ON) - OFF - (ON)				
				H	ON - OFF - (ON)				
				C4	Right angle				
				C6	Vertical mounting				

Terminal style of C (Style : PC Terminal)	C4 Terminal style of C4 (Style : R/A Terminal)	Terminal style of C6 (Style : V/M Terminal)

SPDT

PC Straight



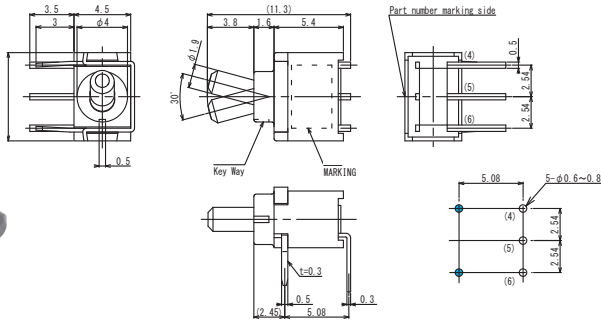
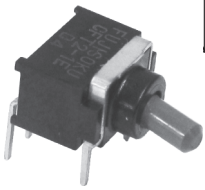
Terminal numbers are not shown on the switch.

PC hole Layouts

Switching function	Key		
Part No.			
CFT2-1DC-AW	ON	—	ON
CFT2-1EC-AW	ON	OFF	ON
☆ CFT2-1GC-AW	(ON)	OFF	(ON)
☆ CFT2-1HC-AW	ON	OFF	(ON)
Connecting terminals	5-6	—	5-4

SPDT

Right Angle Terminal



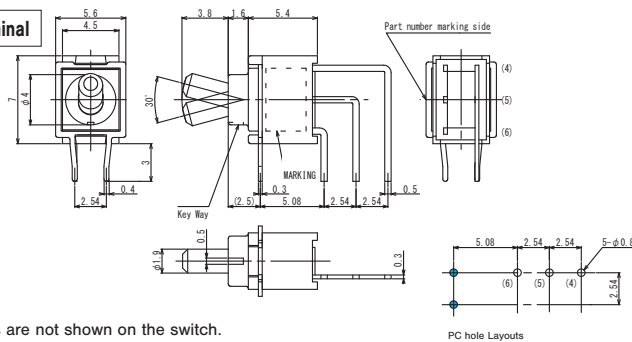
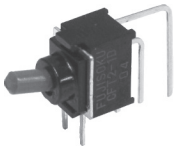
Terminal numbers are not shown on the switch.

PC hole Layouts

Switching function	Key		
Part No.			
CFT2-1DC4-AW	ON	—	ON
CFT2-1EC4-AW	ON	OFF	ON
☆ CFT2-1GC4-AW	(ON)	OFF	(ON)
☆ CFT2-1HC4-AW	ON	OFF	(ON)
Connecting terminals	5-6	—	5-4

SPDT

Vertical mounting terminal



Terminal numbers are not shown on the switch.

PC hole Layouts

Switching function	Key		
Part No.			
CFT2-1DC6-AW	ON	—	ON
CFT2-1EC6-AW	ON	OFF	ON
☆ CFT2-1GC6-AW	(ON)	OFF	(ON)
☆ CFT2-1HC6-AW	ON	OFF	(ON)
Connecting terminals	5-6	—	4-5

※ The above PC hole layout is a view from the switch installation side.

■ Soldering Specifications

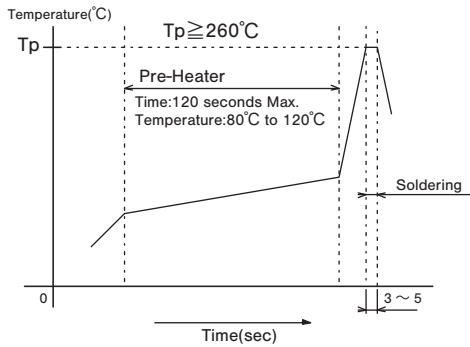
(1) Manual Soldering

Device : Soldering iron
350°C, Max.; 3 seconds, Max.

(2) Auto Soldering

Device : Jet wave type or dip type
260°C, Max.; 3 to 5 seconds (One time)
Total dip time within 10 sec.

- Pre-heating should be done at temperatures ranging from 80°C to 120°C and within 120 sec.



- (3) When soldering two or more terminals to the common land, use the solder resist to solder them independently.

■ Flux Cleaning

- (1) Solvent : Fluorine or Alcohol type.
- (2) Cleaning after soldering should be done after the PC board is exposed to room temperature (30°C or below) for 1 to 2 hours.
- (3) Do not use ultrasonic cleaning.

■ Packaging Specifications

