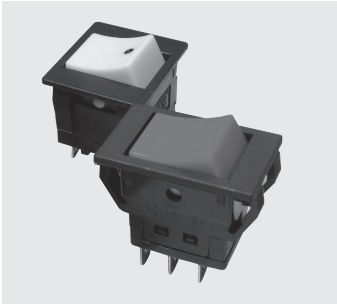


# HLS

## Miniature Rocker Switches

RoHS Compliant



### Features

Economical prices are achieved through out-and-out VA and silver-saving design. Contact stability and high reliability are ensured thanks to the adoption of the seesaw type sliding contact mechanism (patented) (see the figure below) and the switch are usable for a wide range of current capacity from 1 mA to 12 A. In addition, the self-extinguishing phenol resin is used for the housing material, thereby ensuring excellent insulation and surge resistance.

### Part Numbering

**HLS 1 12 A 12**  
 Series code    Number of poles    Current    Switching function    Terminal style

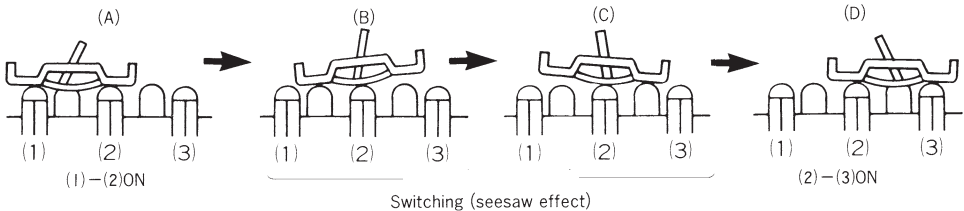
Series code	Actuator shape	Fig.	Number of poles	Fig.	Current	Code	Switching function	Fig.	Terminal styles
HLS		1	1 pole	08	8A	A K	OFF — ON	None	TAB:#187 (t=0.5)
		2	2 poles	12	12A		D N		ON — ON
		3	3 poles						

### Terminal Styles

1 pole		2 poles, 3 poles	
TAB #187 -/Style : -	Solder Terminal 12/Style : 12	TAB #187 -/Style : -	Solder Terminal 12/Style : 12
t=0.5	t=1	t=0.5	t=0.5

### Seesaw Type Sliding Mechanism (Patented)

The movable contact moves from (A) to (B) as it wipes the contact surface and, at (B) and (C), the switching feel can be obtained due to the seesaw effect on the common terminal (2). Then, the movable contact moves from (C) to (D) as it wipes the contact surface and, at the point (D), the common terminal (2) and the terminal (3) are turned ON.

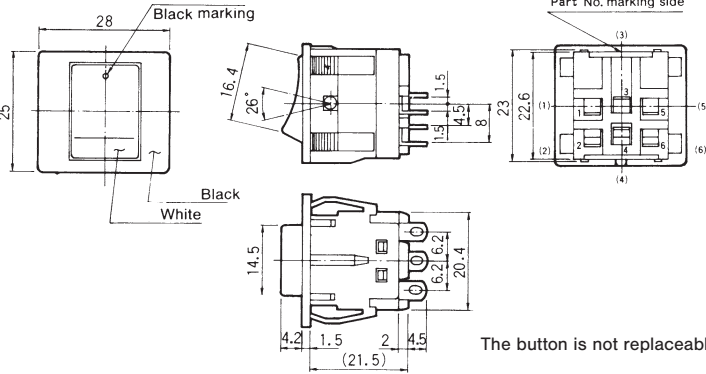
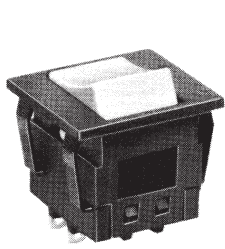




**HLS308**

**3 poles**

Terminal numbers are shown on the bottom of the switch.



Part No.	Marking	
HLS308A12	ON	OFF
Connecting terminals	1-2 3-4 5-6	-

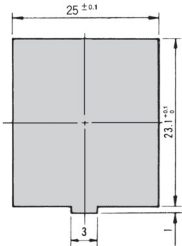
**Solder Terminal**

The button is not replaceable (Color: White).

**Specifications**

Rating		Initial contact resistance	Dielectric strength	Insulation resistance	Electrical life
Maximum rating	AC125 V 8 A AC250 V 5 A	100 mΩ Max. (DC~4 V 1 A)	AC2000 V 1 minute	100 MΩ Min. (DC500 V)	5,000 cycles
Minimum rating	AC·DC6 V 1 mA				

**Panel Cut-Out Dimensions**



Panel thickness : 1~2 mm

**Soldering Specifications**

Device : Soldering iron  
420°C, Max.; 3 seconds, Max.

**Accessories (Without HLS308)**

《Supplied separately》

Accessories	Standard accessories	Optional accessories		
Part name	Button	Button		
Dimensions			Matte finish	$\phi 2.5 \times 0.5$ with $\phi 2.5$ concave
Button color	Part number	Button color	Dot marking	Part number
White	140000480738	White	Red	140000480874
Red	140000480628	White	Black	140000481081
Black	140000480621	—	—	—
Gray	140000480629	—	—	—
Green	140000480631	Black	White	140000480710
Blue	140000480632	Black	Red	140000480650

A Color Button is supplied with the switch. Please select from the left standard accessories.

: Optional Accessories.

**Table of Part Numbers and UL and CSA listed**

Switching function	TAB terminals (# 187)		Solder terminals		
	1-pole	2-poles	1-pole	2-poles	3-poles
OFF - ON	HLS112A	HLS208K	HLS112A12	HLS208K12	<b>HLS308A12</b>
ON - ON	HLS112D	HLS208N	HLS112D12	HLS208N12	—

★ : Made to order products. ☆ : Semi-standard products. : UL recognized : CSA certified

Even if the products are of UL or CSA-approved ones, The products in stock do not carry the UL mark of the CSA mark. When placing an order, be sure to specify "With UL/CSA Mark." For the products with the UL mark or the CSA mark, extra costs will be added.

UL File No.E43275  
CSA File No.LR38341