

SMAP

Surface Mount Pushbutton Switches

Washable

RoHS Compliant



Features

- Compatible with Reflow Soldering
- Washable
- Gold-Plated Contacts for Low Current Application
- Clip Contact Mechanism for High Contact Reliability

Specifications

Rating	Max.	0.4 VA (28 VDC max.) (Resistive load)
	Min.	1 μ A 20 mVDC (Resistive load)
Initial contact resistance	100 m Ω max. (1.5 mA 200 μ VAC)	
Dielectric strength	250 VAC 1 minute	
Initial insulation resistance	500 M Ω min. (250 VDC)	
Stroke	1.4 mm	
Operating force	1.47 \pm 0.98 N	
Electrostatic capacity	5 pF max.	
Electrical life	10,000 operations at max. rating	
	30,000 operations at min. rating	
Switch timing	Non-shorting	
Operating temperature range	-20 \sim +80 $^{\circ}$ C	
Storage temperature range	-40 \sim +80 $^{\circ}$ C	

Table of Part Numbers

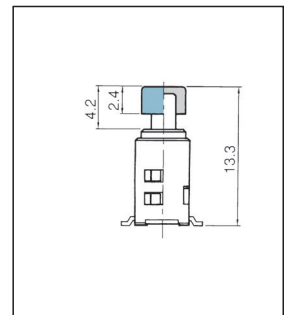
Packaging specifications	Terminal styles	Switching function	Poles
			1 pole
Stick	PC Straight	ON—(ON)	SMAP1F-2M-Z
	Right-angle	ON—(ON)	SMAP1F-5M-Z
Emboss tapping	Right-angle	ON—(ON)	SMAP1F-5M-E-Z

Optional Accessories

《Sold separately》

Color Cap	
Material: ABS resin	
White	140000481453
Red	140000481452
Black	140000481451
Gray	140000481450

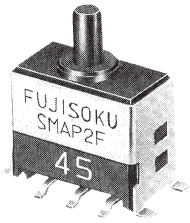
Color Cap Mounting



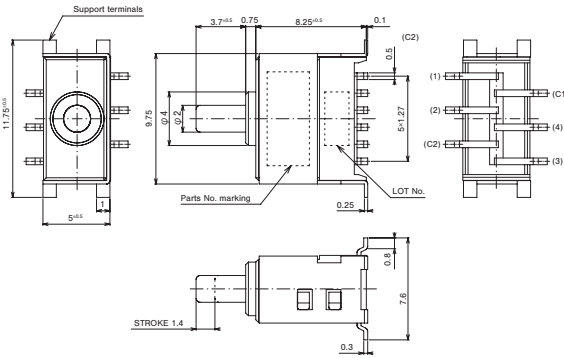
Packaging Specifications

Emboss tapping		Stick	
500 pcs./reel		l = 570 50pcs./stick	l = 570 50pcs./stick

SMAP-2M



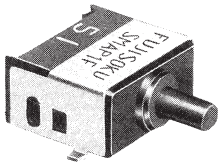
PC



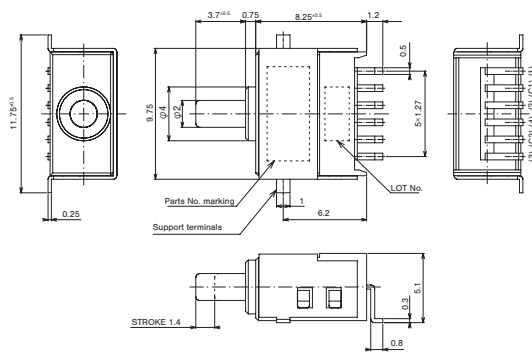
Terminal number not shown on box.

Switching function		Push
Part No.	ON	(ON)
☆SMAP1F-2M-Z	ON	(ON)
Connecting terminals	C1-2	C1-1

SMAP-5M



R/A

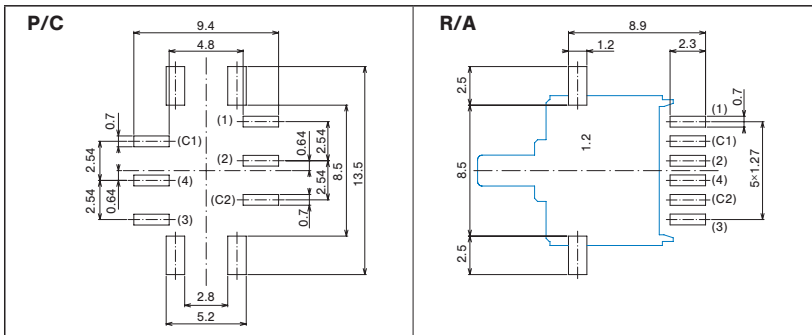


Terminal number not shown on box.

Switching function		Push
Part No.	ON	(ON)
SMAP1F-5M-Z SMAP1F-5M-E-Z	ON	(ON)
Connecting terminals	C1-2	C1-1

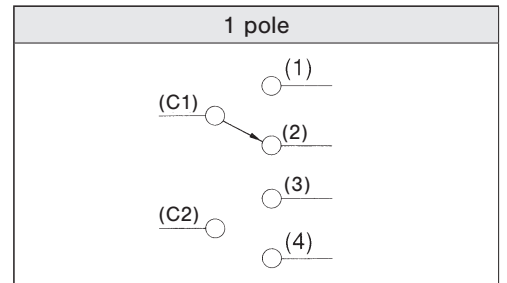
(ON) : Momentary

Pad Layouts (Top view)



The blue line shows the outline of the switch.

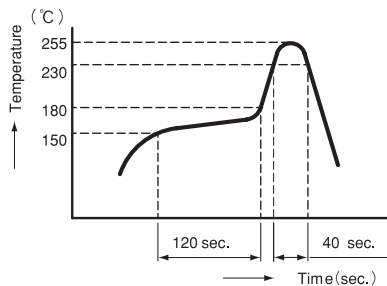
Circuit Diagrams



*In a single-pole configuration, terminals (C2), (3) and (4) are not connected.

Soldering Specifications

- (1) Manual Soldering
 - Device : Soldering iron
 - 380°C ±10°C; 3±0.5 seconds
- (2) Reflow Soldering
 - Device : Inline or batch system
 - Apply reflow soldering only once



Flux Cleaning

- (1) Solvent :Fluorine or Alcohol type
- (2) Cleaning after soldering should be done after the terminal temperature falls to 90°C or below, or after leaving the switch for five minutes or longer at room temperature.
- (3) Do not use ultrasonic cleaning.